

*Franklyn
James*



Kew House, 56 Blackheath Hill, SE10 8EU

£2,700 Per Calendar Month



Kew House, 56 Blackheath Hill, SE10 8EU

£2,700 Per Calendar Month

- Suitable for a family or two separate sharers
- Greenwich collection development
- Three double bedroom apartment
- Large open-plan kitchen/living room
- Large bathroom and separate cloakroom
- Private balcony
- Abundance of natural light
- Ample storage
- 0.5 m from Deptford Bridge DLR station
- Located 0.6 m from Greenwich DLR

EPC rating- C
Tax band- D

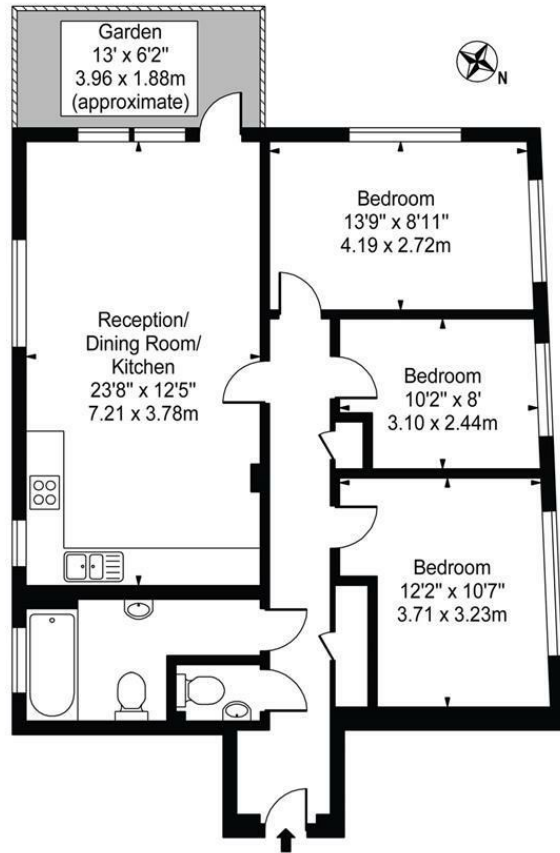


Suitable for a family or two separate sharers A modern, fourth floor, three double bedroom apartment in this landmark development between Greenwich and Blackheath. The flat is wonderfully light and all the rooms have large windows with a bright aspect. There are three double bedrooms, a large open-plan kitchen/living room, a large bathroom and separate cloakroom. The flat further benefits from a large balcony off the reception room.

Located 0.6 m from Greenwich DLR and overland stations and 0.5 m from Deptford Bridge DLR station, The Greenwich Collection development is conveniently situated for Blackheath Village, Greenwich and also the thriving and diverse areas of Lewisham, Deptford and New Cross.

Kew House, SE10

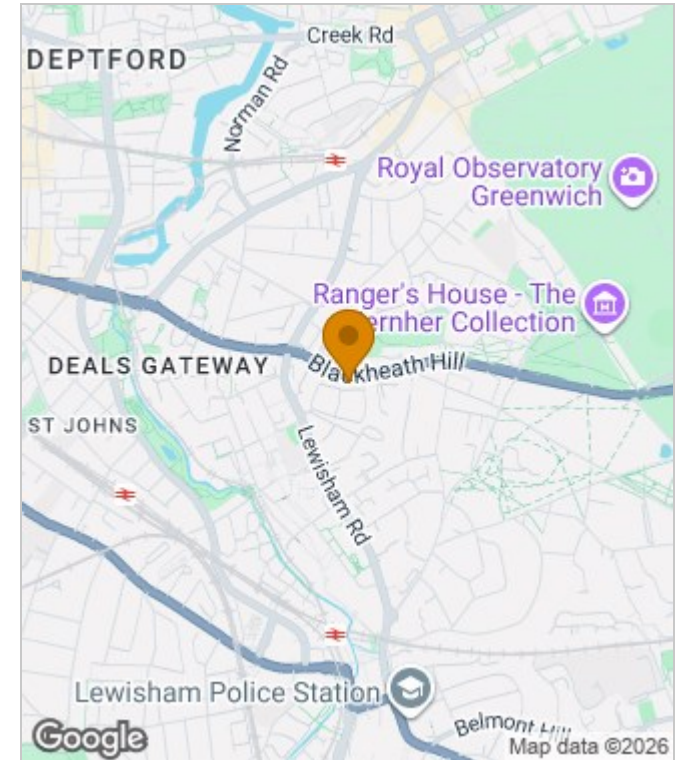
Approx. Gross Internal Area 868 Sq Ft - 80.64 Sq M



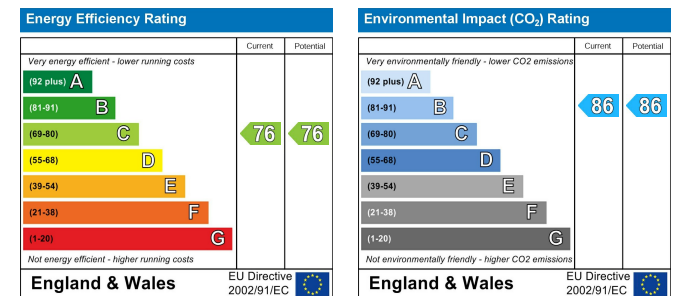
Fourth Floor
For Illustration Purposes Only - Not To Scale

This floor plan should be used as a general outline for guidance only and does not constitute in whole or in part an offer or contract. Any intending purchaser or lessee should satisfy themselves by inspection, searches, enquiries and full survey as to the correctness of each statement. Any areas, measurements or distances quoted are approximate and should not be used to value a property or be the basis of any sale or let.

Area Map



Energy Performance Graph



These particulars, whilst believed to be accurate are set out as a general outline only for guidance and do not constitute any part of an offer or contract. Intending purchasers should not rely on them as statements of representation of fact, but must satisfy themselves by inspection or otherwise as to their accuracy. No person in this firm's employment has the authority to make or give any representation or warranty in respect of the property.